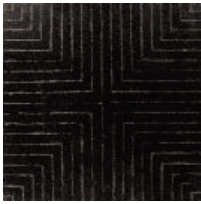


FRANK STELLA
BLACK, ALUMINUM, COPPER
PAINTINGS

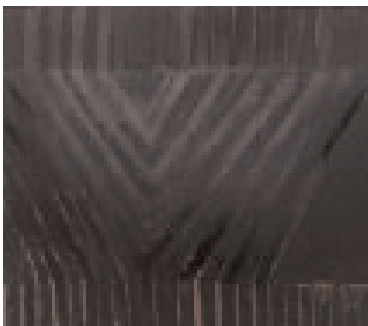
First Floor
Front Gallery



Untitled, 1959
enamel on canvas board
12 x 12 inches
Collection of Martin Z. Margulies



Zambezi, 1959
enamel on canvas
90 3/4 x 78 3/4 inches
San Francisco Museum of Modern Art,
Gift of Harry W. and Mary Margart Anderson



Delta, 1958
enamel on canvas
85 3/8 x 97 inches
Collection of the Artist

FRANK STELLA
BLACK, ALUMINUM, COPPER
PAINTINGS

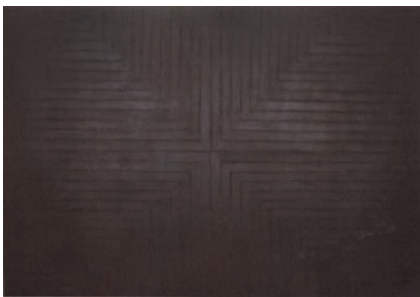
First Floor
Back Gallery



Bethlehem's Hospital, 1959
enamel on canvas
86 1/4 x 134 3/4 x 3 inches
Glenstone



Point of Pines, 1959
enamel on canvas
84 3/4 x 109 1/8 inches
Collection of the Artist



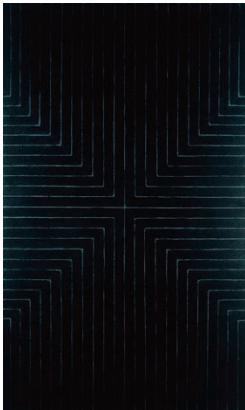
Arbeit Macht Frei, 1958
enamel on canvas
85 x 121 1/2 inches
Private Collection

FRANK STELLA
BLACK, ALUMINUM, COPPER
PAINTINGS

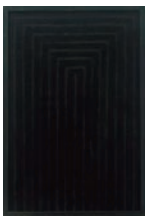
Second Floor
Rotunda



Telluride, 1962
oil on canvasboard with copper paint
22 1/2 x 27 inches
Private Collection



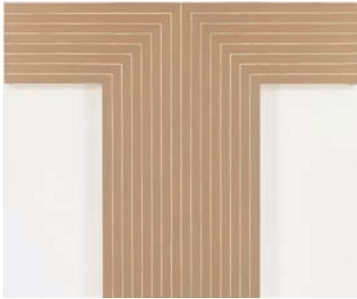
Die Fahne hoch!, 1959
enamel on canvas
121 1/2 x 73 inches
Whitney Museum of American Art, New York



Untitled, 1959
enamel on Masonite
17 3/4 x 11 3/4 inches
Private Collection

FRANK STELLA
BLACK, ALUMINUM, COPPER
PAINTINGS

Second Floor
Back Gallery



Telluride, 1960-1961
copper paint on canvas
82 1/2 x 99 1/2 inches
Private Collection



Creede I, 1961
copper paint on canvas
82 1/2 x 82 1/2 inches
Collection of Martin Z. Margulies



Pagosa Springs, 1960
copper paint on canvas
99 3/8 x 99 1/4 inches
Hirshhorn Museum and Sculpture Garden,
Smithsonian Institution, Washington, DC,
Gift of Joseph H. Hirshhorn, 1972

FRANK STELLA
BLACK, ALUMINUM, COPPER
PAINTINGS

Second Floor
Front Gallery



Averroes, 1960
Aluminum paint on canvas
73 13/16 x 71 5/8 inches
The Philip Johnson Glass House,
A National Trust Historic Site



Marquis de Portago, 1960
Aluminum paint on canvas
93 1/8 x 71 1/2 x 3 1/8 inches
Collection of Robert and Jane Meyerhoff
Promised to National Gallery of Art, Washington, DC



Avicenna, 1960
Aluminum paint on canvas
74 1/2 x 72 inches
The Menil Collection, Houston