

DOMINIQUE LÉVY

"HYPOTHESIS FOR AN EXHIBITION"

JULY 8 - AUGUST 16, 2014



SETH PRICE

Untitled

2008

Pencil and charcoal on paper

Framed Dimensions:

27 1/4 x 21 1/4 inches (69.2 x 54 cm)

Paper size:

23 1/4 x 17 1/2 (59 x 44.4 cm)



SETH PRICE

Untitled

2008

Pencil and charcoal on paper

Paper Size:

17 1/2 x 23 1/4 inches (44.5 x 59.1 cm)

Framed dimensions:

21 1/4 x 27 1/4 (53.9 x 69.2 cm)



SETH PRICE

Standard Household Set

2011

UV-cured inkjet on aluminum
composite

6 x 9 1/2 inches (15.2 x 24.1 cm) each

Ten panels

Unique





CHARLES MAYTON

Indentation for Space Between _____
2011-2014

Photographic print on canvas

Two panels

33 x 26 inches (83.8 x 66 cm) each

Signed and dated *Charles Mayton*
2014 (on the reverse)

Unique



GIULIO PAOLINI

Un quadro - Ahmed Barka (A Painting - Ahmed Barka)

1970

Photo emulsion on canvas

15 3/4 x 23 1/2 inches (40 x 59.7 cm)

One of 14 elements



SEBASTIAN BLACK

Untitled

2014

Wood, gouache on paper drawing in
artist's wood frame, plastic painted
figurine, felt

4 x 30 1/2 x 18 inches (10.2 x 77.5 x 45.7
cm)



RICHARD ALDRICH

Birthmark

2012

Paper and Polaroid on linen

84 x 58 inches (213.4 x 147.3 cm)



GIULIO PAOLINI

Mimesi (Mimesis)

1975

Resin casts with marble bases

12 7/8 inches (32.7 cm) each cast

height

Unique



SEBASTIAN BLACK

New Yorker Piece (Frame)

2014

Cut-out The New Yorker magazine
ads, paper, artist's wood frame

41 x 31 1/8 inches (104.1 x 79.1 cm)



VIOLA YESILTAÇ

Untitled

2011

C-type print

28 x 24 inches (71.1 x 61 cm)

Edition 1 of 3



VIOLA YESILTAÇ

Untitled

2011

Silver Gelatin print

28 x 24 inches (71.1 x 61 cm)

Edition 1 of 3



VIOLA YESILTAÇ

Untitled

2011

C-type print

28 x 24 inches (71.1 x 61 cm)

Edition 1 of 3



GIULIO PAOLINI

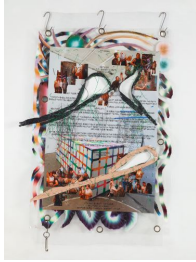
Autoritratto

1968

Photographic emulsion on canvas

59 1/2 x 49 3/4 inches (151.1 x 126.4 cm)

Unique

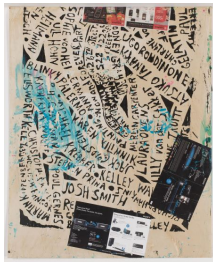


**KAYA (KERSTIN BRATSCH
AND DEBO EILERS)**

KAYA IV

S is for Sex (Chamberbag Clubhand)
2014

Grommets, Mylar, vinyl, oil, digital
print, epoxy, vinyl wire, meat hooks
65 x 48 inches (165.1 x 121.9 cm)



JOSH SMITH

Untitled

2008

Mixed media on panel
60 x 48 inches (152.4 x 121.9 cm)
Signed and dated *Josh Smith 2008* (on
the reverse)

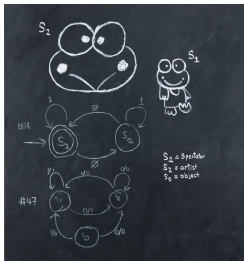


ANTEK WALCZAK

haha still pretty cute

2014

Urethane enamel, pigment, oil paint,
paint marker on canvas
60 x 56 inches (152.4 x 142.2 cm)

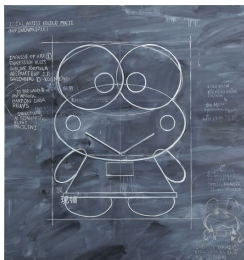


ANTEK WALCZAK

Mona Lisa v. Furniture v. Instagram

2014

Acrylic paint, oil paint, wax crayon,
paint marker on canvas
60 x 56 inches (152.4 x 142.2 cm)

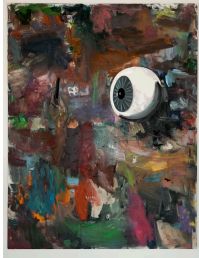


ANTEK WALCZAK

Simple Frog (Ideal Artist MK II)

2014

Oil paint, pigment, wax crayon, chalk,
paint marker on canvas
60 x 56 inches (152.4 x 142.2 cm)



CHARLES MAYTON

Untitled

2014

Oil on canvas

66 x 51 inches (167.6 x 129.5 cm)

Signed and dated *Charles Mayton*
2014 (on the reverse)



SEBASTIAN BLACK

New Yorker Piece (Plinth)

2014

Cut-out *The New Yorker* magazine
ads, paper, plinth, Plexiglas

41 1/2 x 45 1/4 x 3 15/16 inches (105.4 x
114.9 x 10 cm)



KERSTIN BRÄTSCH

Single brushstrokes in lead from
"Glow rod tanning with" series

2012

Baked and sandblasted Artista glass,
lead and antique glass

9 x 17 1/4 x 1/2 inches (22.9 x 43.8 x 1.3
cm)



KERSTIN BRÄTSCH

Interchangeable Painting (3 parts)
from "Glow rod tanning with"
series

2014

Mylar, oil, fluorescent light bulbs,
museum wall



GIULIO PAOLINI

Diapason

1979-80

Graphite on canvas, canvas, wood,
bronze

42 x 39 1/4 inches (106.7 x 99.7 cm)

Titled, signed and dated *Diapason*
Giulio Paolini 1979-80 (on the reverse)



SEBASTIAN BLACK

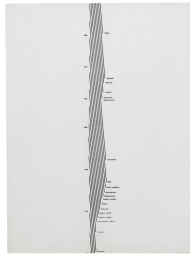
Period Piece

2014

Enamel on engraved dibond

21 7/8 x 12 inches (55.6 x 30.5 cm)

Signed and dated *Sebastian Black*
2014 (on the reverse)



GIULIO PAOLINI

174

1965

Photograph mounted on panel

9 1/2 x 7 1/8 inches (24.1 x 18.1 cm)

Edition 1 of 3

Titled, signed and dated *174 Giulio*
Paolini 1965 (on the reverse)



HAROLD ANCART

Perfect Idea (1) (After You Have No
Idea)

2014

Oilstick on paper

47 1/4 x 37 1/4 inches (120 x 94.6 cm)



R. H. QUAYTMAN

Spine, Chapter 20 (iamb) (380)

2010

Oil, silkscreen ink, and gesso on
wood

32 3/8 x 52 3/8 inches (82.2 x 133 cm)



GUYTON\WALKER

Untitled

2009

Inkjet print on drywall and paint can
with inkjet print

48 x 96 x 1/2 inches (121.9 x 243.8 x 1.3
cm)

Edition 8 of 10