

SHI GUORUI

Shanghai 8 September 2008

2008

unique camera obscura Gelatin silver
print

Total: 86 7/16 x 167 7/16 inches (219.5
x 426 cm) (Triptych)

Unique



DAMIEN HIRST

Beautiful Bodhisattva Trance Painting

2007

household gloss on canvas

72 inches (182.9 cm) diameter

signed, titled and dated (on the reverse)



DAMIEN HIRST

Hydroquinone

2006

household gloss on canvas

21 x 25 inches (53.3 x 63.5 cm)

signed and titled (on the reverse); signed
again (on the stretcher)



ZHANG HUAN

Renascence No. 8

2007

ash on linen

39 3/8 x 59 inches (100 x 149.9 cm)

signed, titled and dated (on the reverse)

DOMINIQUE LEVY ROBERT MNUCHIN

L&M Arts New York 45 East 78 Street New York NY 10075 T 212-861-0020 F 212-861-7858

L&M Arts Los Angeles 660 South Venice Boulevard Venice CA 90291 T 310-821-6400 F 310-821-6442

L&M Arts - Art Hong Kong 2012 continued



ZHANG HUAN

Youth

2007

incense ash, charcoal and resin on canvas

98 1/2 x 158 1/4 inches (250.2 x 402 cm)

signed in Pinyin, titled in Chinese and dated 2007 (on the reverse)



YVES KLEIN

Table Bleue

after 1963

plexiglas, glass, steel legs and blue pigment

14.96 x 39.37 x 49.21 inches (38 x 100 x 125 cm)



YVES KLEIN

Table Rose

after 1963

plexiglas, glass, steel legs and rose pigment

14.96 x 39.37 x 49.21 inches (38 x 100 x 125 cm)



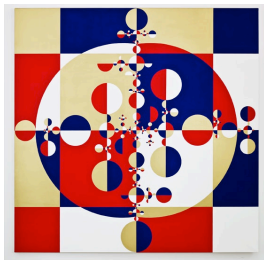
JEFF KOONS

Inflatable Yellow Flower

2011

high chromium stainless steel with transparent color coating

71 x 36 1/2 x 1 1/2 inches (180.3 x 92.7 x 3.8 cm)



GABRIEL OROZCO

Spinning Spiral

2005

acrylic on canvas

78 3/4 x 78 3/4 inches (200 x 200 cm)

L&M Arts - Art Hong Kong 2012 continued



JEAN-MICHEL OTHONIEL

Amant Suspendu/Hanging Lover

2010

Murano glass, steel

30 1/4 x 6 x 6 inches (76.8 x 15.2 x 15.2 cm)

unique



PABLO PICASSO

Couple assis

November 1, 1971

colored felt-tip pens, black and white wax crayons, brush and gray wash on board

5 1/4 x 7 1/2 inches (13.3 x 19.1 cm)

dated and numbered *1.11.71.I* (upper left); dated and numbered again *1.11.71.*

I (on the reverse)



PABLO PICASSO

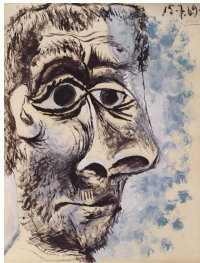
Mousquetaire assis contemplant une femme

April 9, 1970

violet felt-tip pen on paper

12 1/2 x 19 1/4 inches (31.8 x 49 cm)

dated *9.4.70* (upper right)



PABLO PICASSO

Tête d'homme

July 15, 1969

oil on paper

25 3/4 x 19 7/8 inches (65.4 x 50.5 cm)

signed and dated *Picasso 15.7.69* (upper right)



PABLO PICASSO

Vieil homme et buste de femme

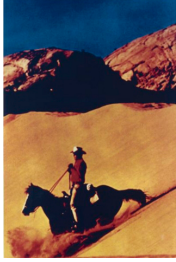
1971

pencil, brush and gray wash on paper mounted on board

12 1/4 x 9 5/8 inches (31.1 x 24.4 cm)

dated twice and numbered *8.12.71 IV*
10.12.71 (center right)

L&M Arts - Art Hong Kong 2012 continued



RICHARD PRINCE

Untitled

1994

Ektacolor photograph

61 x 41 inches (154.9 x 104.1 cm)

Edition 1/2



ROBIN RHODE

School of Fish

2012

9 plexiglass alu-dibond mounted panels

Each color photograph: 23.6 x 15.6

inches (60 x 39.8 cm)

Edition 1/5, + 2 AP



MATTHEW RITCHIE

The Conquered Sun

2011

Aluminum structural units, epoxy coating, steel, sintered polyamid and enamel

80 x 43 x 42 inches (203.2 x 109.2 x

106.7 cm)



MATTHEW RITCHIE

the hour of the apple

2011

oil and ink on linen

74 x 56 inches (188 x 142.2 cm)

signed and dated *Matthew Ritchie 2011*

(on the reverse top right)



MATTHEW RITCHIE

the third hour

2011

oil and ink on linen

74 x 56 inches (188 x 142.2 cm)

signed and dated *Matthew Ritchie 2011*

(on the reverse top right)



ANDY WARHOL

Butterflies

c. 1955

hand-colored lithograph on paper

13 x 18 inches (33 x 45.7 cm)

L&M Arts - Art Hong Kong 2012 continued



ANDY WARHOL

Couple

c. 1957

ink with color dyes and gold leaf on
Strathmore paper

22 x 13 1/2 inches (55.9 x 34.3 cm)

signed *Andy Warhol* (lower center)



ANDY WARHOL

Dollar Sign

1981

synthetic polymer paint and silkscreen
inks on canvas

20 x 16 inches (50.8 x 40.6 cm)

signed and dated *Andy Warhol 81* (on
the overlap)



ANDY WARHOL

Female Head

c. 1958

ink and Dr. Martin's Aniline dye on
Strathmore paper

23 x 12 1/8 inches (58.4 x 30.8 cm)

stamped by the Estate of Andy Warhol
and the Andy Warhol Foundation for
the Visual Arts, Inc., and numbered
295.030 (on the reverse)



ANDY WARHOL

Female Head with Purple Hair

c. 1959

ink and colored ink wash on paper

22 5/6 x 14 1/8 inches (58 x 35.9 cm)

stamped by the Estate of Andy Warhol
and the Andy Warhol Foundation for
the Visual Arts, Inc., and numbered
296.006 (on the reverse)



ANDY WARHOL

Flower Arrangement

c. 1957

gold leaf and ink on colored graphic
paper

18 x 10 5/8 inches (45.7 x 27 cm)

stamped by the Estate of Andy Warhol
and the Andy Warhol Foundation for
the Visual Arts, Inc. and numbered
286.009 (on the reverse)

L&M Arts - Art Hong Kong 2012 continued



ANDY WARHOL

Flowers

1978

silkscreen ink on paper

45 x 35 inches (114.3 x 88.9 cm)

stamped Andy Warhol Enterprises, Inc. 1978

(upper left)



ANDY WARHOL

Hand and Flowers (A Gold Book)

c. 1957

offset lithograph and watercolor on paper

14 1/4 x 10 inches (36.2 x 25.4 cm)



ANDY WARHOL

Profile of a Roman Head

c. 1957

gold leaf and ink on paper

20 x 14 inches (50.8 x 35.6 cm)

stamped by The Andy Warhol Art

Authentication Board, Inc. and

numbered *A112.046* (on the reverse)



ANDY WARHOL

Self-Portrait

1967

silkscreen on paper

25.51 x 21.26 inches (64.8 x 54 cm)

signed *Andy Warhol* (lower right)

The Andy Warhol Foundation for the

Visual Arts No. A149.089



TOM WESSELMANN

Great American Nude No. 10

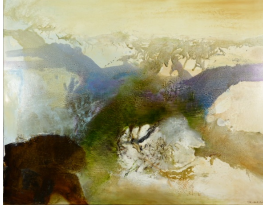
1961

oil and paper collage on panel

47 1/2 x 47 1/2 inches (120.7 x 120.7 cm)

signed and dated *61* and titled (on the reverse)

L&M Arts - Art Hong Kong 2012 continued



ZAO WOU-KI

1997

oil on canvas

44 7/8 x 57 1/2 inches (114 x 146.1 cm)



ZAO WOU-KI

01.12.64

1964

oil on canvas

51 3/16 x 35 inches (130 x 88.9 cm)