



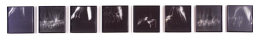
**JEAN ARP**

Volatil et phrygien

1963

painted wood relief

22 7/8 x 11 3/4 inches (58.1 x 29.8 cm)



**JOHN BALDESSARI**

Strobe Series/Futurist: Dog on Leash  
(for Balla)

1975

eight (8) black and white photographs

11 x 11 inches (27.9 x 27.9 cm) each



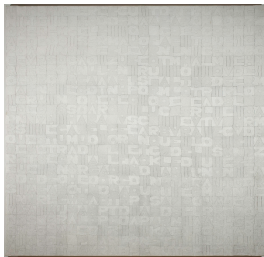
**JOHN BALDESSARI**

Untitled (Directional Piece)

1972-73

photographic work in twenty-two (22)  
parts

3 1/2 x 5 inches (8.9 x 12.7 cm) each



**ALIGHIERO BOETTI**

Titoli Bianchi

1978

white monochrome embroidery

70 x 68 inches (177.8 x 172.7 cm)

DOMINIQUE LEVY      ROBERT MNUCHIN

L&M Arts New York 45 East 78 Street New York NY 10075 T 212-861-0020 F 212-861-7858

L&M Arts Los Angeles 660 South Venice Boulevard Venice CA 90291 T 310-821-6400 F 310-821-6442



**MARK BRADFORD**

Mithra

2008

mixed media collage on canvas

72 x 84 inches (182.9 x 213.4 cm)



**ALBERTO BURRI**

Bianco T

1952

cloth, oil on canvas

31 1/8 x 43 1/4 inches (79.1 x 109.9 cm)



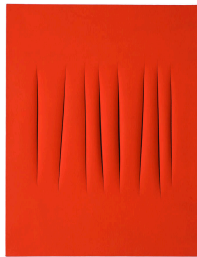
**ALEXANDER CALDER**

The Black Rocker

1945

painted sheet metal, rod and wire

49 x 44 inches (124.5 x 111.8 cm)



**LUCIO FONTANA**

Concetto Spaziale, Attese

1968

water based paint on canvas, red

45 5/8 x 35 1/8 inches (115.9 x 89.2 cm)



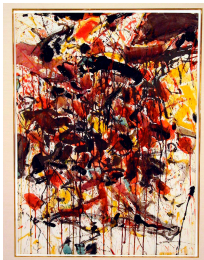
**LUCIO FONTANA**

Crocifisso

1953

polychrome ceramic with gold

15 x 8 1/2 x 4 3/4 inches (38 x 21.5 x 12 cm)



**SAM FRANCIS**

Black and So On

1958

watercolor and gouache on paper

29 1/8 x 21 1/2 inches (74 x 54.6 cm)



**DAMIEN HIRST**

Hydroquinone

2006

household gloss on canvas

21 x 25 inches (53.3 x 63.5 cm)



**ED KIENHOLZ**

Untitled

1959

mixed media

43 x 25 1/2 x 6 1/2 inches (109.2 x

64.8 x 16.5 cm)



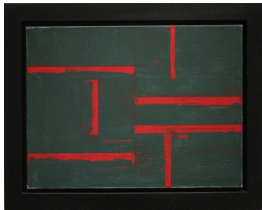
**JEFF KOONS**

Inflatable Yellow Flower

2011

high chromium stainless steel with  
transparent color coating

71 x 36 1/2 x 1 1/2 inches (180.3 x 92.7  
x 3.8 cm)



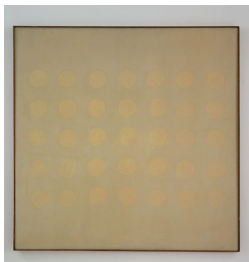
**BRICE MARDEN**

Sketch II

1983

oil on graphite on canvas

18 x 24 inches (45.7 x 61 cm)



**AGNES MARTIN**

Buds

c. 1960

oil on canvas

50 x 50 inches (127 x 127 cm)



**AGNES MARTIN**

Untitled #1

1992

acrylic and graphite on canvas

72 x 72 inches (182.9 x 182.9 cm)



**AGNES MARTIN**

Untitled #4

1987

acrylic and pencil on linen

72 x 72 inches (182.9 x 182.9 cm)



**PAUL MCCARTHY**

White Toilet Man - Toilet Figure

2003

platinum silicone, fiberglass, stainless steel and milled steel core

43 1/4 x 43 1/4 x 39 3/8 inches (109.9 x 109.9 x 100 cm)



**JOAN MIRÓ**

Femme, étoiles (Woman, Stars)

1944

oil on canvas

8 5/8 x 6 1/4 inches (22 x 16 cm)



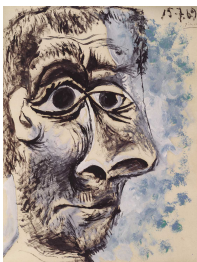
**RICHARD PETTIBONE**

Andy Warhol "Most Wanted Men, John Victor G., 1963", Andy Warhol "Jackie, 1964" (fifteen times), Andy Warhol "Flowers, 1964" (sixteen times), Frank Stella "Hiragla Variatia, 1969"; and Roy Lichtenstein "The Refrigerator, 1962"

1971

silkscreen, acrylic and oil on canvas

15 x 37 inches (38.1 x 94 cm)



**PABLO PICASSO**

Tête d'homme

July 15, 1969

oil on paper

25 3/4 x 19 7/8 inches (65.4 x 50.5 cm)



**ED RUSCHA**

The End #45

2004

acrylic and ink on paper

24 x 30 inches (61 x 76.2 cm)



**ROBERT RYMAN**

Cracker

1998-2003

oil on canvas

23 x 23 inches (58.4 x 58.4 cm)



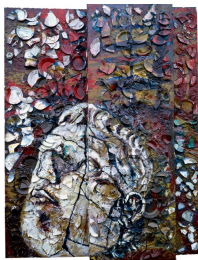
**ROBERT RYMAN**

Page

1998

oil and graphite on stretched linen

15 1/8 x 15 1/8 inches (38.4 x 38.4 cm)



**JULIAN SCHNABEL**

800 Blows

1983

oil, plates, bondo on wood

108 x 84 inches (274.3 x 213.4 cm)



**DAVID SMITH**

Agricola XII

1952

steel

32 x 23 7/8 x 4 5/8 inches (81.3 x 60.6

x 11.7 cm)



**FRANK STELLA**

Untitled (Single Concentric Square)

1967

acrylic and graphite on canvas

68 7/8 x 68 7/8 inches (174.9 x 174.9

cm)



**CY TWOMBLY**

Study for By the Ionian Sea (Rome)

1962

oil based house paint, oil paint, and lead pencil on canvas

15 3/4 x 11 3/4 inches (40 x 29.8 cm)



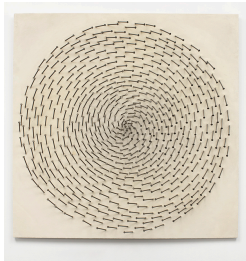
**GÜNTHER UECKER**

Chair II

1963

nails on wood

34 1/4 x 18 1/2 x 17 3/4 inches (87 x 47 x 45 cm)



**GÜNTHER UECKER**

Zero Garden

1966

nails on canvas on wood

31 7/8 x 31 7/8 x 2 inches (81 x 81 x 5 cm)



**ANDY WARHOL**

Dollar Sign

1981

synthetic polymer paint and silkscreen inks on canvas

20 x 16 inches (50.8 x 40.6 cm)



**ANDY WARHOL**

Mao

1973

acrylic, clear acrylic medium, and silkscreen ink on linen, varnished

26 1/8 x 22 1/8 inches (66.4 x 56.2 cm)